



SHANGHAI XIANG RONG INDUSTRIAL EQUIPMENT CO. LTD
上海效字机电设备有限公司

**Precision manufacturing
makes difference®**





XSC nozzle liners are self-sintered with nano-level ultra-fine silicon carbide recipe. With 10% higher hardness and toughness, XSC-made nozzles offer at least 20% higher lifetime at similar cost to existing silicon carbide standards.

● Long Conventional Venturi Nozzles

Description: Long venturi nozzles with XSC liners and UNC 2"-4 1/2 coarse threaded Al jackets plus rubber sleeves.

P/N	MODEL	d(mm)	L(mm)	REMARK
12661	XSCLV-3/50	4.8	140	
10110	XSCLV-4/50	6.4	140	
10120	XSCLV-5/50	7.9	145	1 1/4"
10130	XSCLV-6/50	9.5	170	INLET
10140	XSCLV-7/50	11.0	195	l=32mm
10150	XSCLV-8/50	12.7	215	
10160	XSCLV-10/50	16.0	230	
10170	XSCLV-12/50	19.0	230	

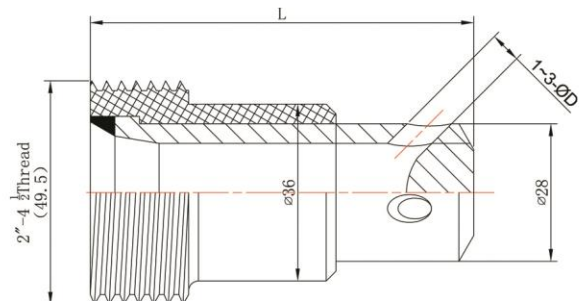


● Angle Nozzles

45 degree angle sandblasting nozzles are available in single and triple (equi-spaced) side outlets. They are ideal for blasting recesses, behind angles and inside pipes.

Description: Angle nozzles with XSC liners and a UNC 2"-4 1/2 coarse threaded Al jacket.

P/N	MODEL	d(mm)	L(mm)
10180	XSCAN-2X1/50	1x3.2	78
10190	XSCAN-2X2/50	2x3.2	78
10200	XSCAN-2X3/50	3x3.2	78
10210	XSCAN-3X1/50	1x4.8	78
10220	XSCAN-3X2/50	2x4.8	78
10230	XSCAN-3X3/50	3x4.8	78
10240	XSCAN-4X1/50	1x6.4	78
10250	XSCAN-4X2/50	2x6.4	78
10260	XSCAN-4X3/50	3x6.4	78
10270	XSCAN-5X1/50	1x8.0	78
10280	XSCAN-5X2/50	2x8.0	78
10290	XSCAN-5X3/50	3x8.0	78
10300	XSCAN-6X1/50	1x9.5	78
10310	XSCAN-6X2/50	2x9.5	78
10320	XSCAN-6X3/50	3x9.5	78



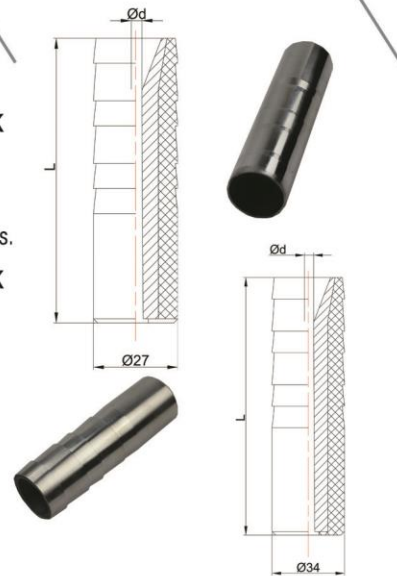
● Stick-Up Nozzles

Description: Stick-up nozzles with XSC liners and Al jackets fitting ID25mm hoses

P/N	MODEL	d(mm)	L(mm)	REMARK
10330	XSCSU-4/25	6.4	100	INLET
10340	XSCSU-5/25	7.9	100	(18mm)

Description: Stick-up nozzles with XSC liners and Al jackets fitting ID32mm hoses.

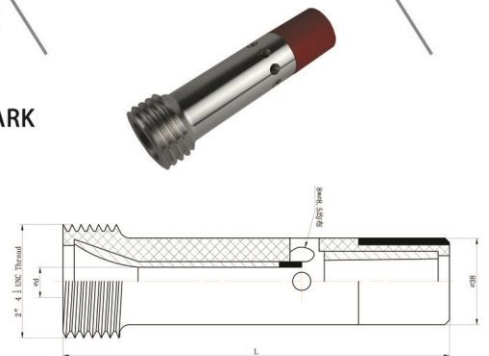
P/N	MODEL	d(mm)	L(mm)	REMARK
10350	XSCSU-4/32	6.4	110	INLET (25mm)
10360	XSCSU-5/32	7.9	110	
10370	XSCSU-6/32	9.5	110	
10380	XSCSU-7/32	11.0	110	
10390	XSCSU-8/32	12	110	
10400	XSCSU-9/32	14	110	



● Long Double Venturi Nozzles

Description: Long double venturi nozzles with XSC liners and UNC 2"-4 1/2 coarse threaded Al jackets plus rubber sleeves.

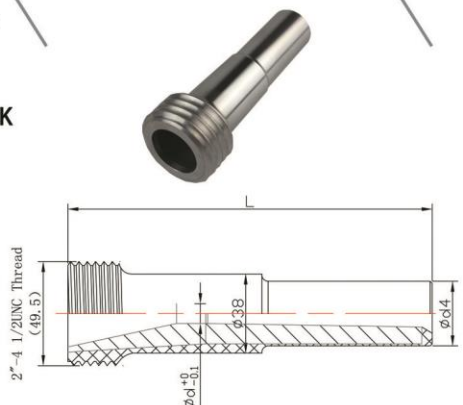
P/N	MODEL	d(mm)	L(mm)	REMARK
10410	XSCDV-4/50	6.4	135	1 1/4" INLET l=32mm
10420	XSCDV-5/50	7.9	155	
10430	XSCDV-6/50	9.5	170	
10440	XSCDV-7/50	11.0	215	
10450	XSCDV-8/50	12.7	230	



● Medium Venturi Nozzles

Description: Medium venturi nozzles with XSC liners and UNC 2"-4 1/2 coarse threaded Al jackets.

P/N	MODEL	d(mm)	L (mm)	REMARK
10460	XSCMV-4/50	6.4	85	1" INLET l=25mm
10470	XSCMV-5/50	7.9	85	
10480	XSCMV-6/50	9.5	85	
10490	XSCMV-7/50	11.0	85	
10500	XSCMV-8/50	12.0	85	



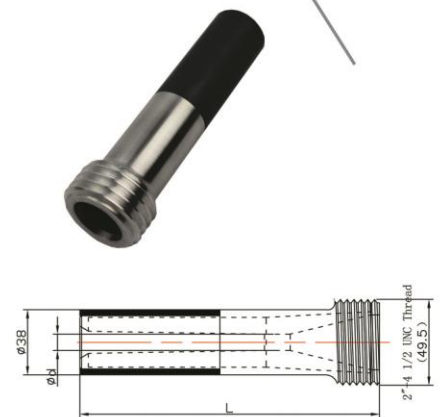


XSB nozzles have liners self-sintered with ultra-fine boron carbide recipe. With close hardness and mechanical wearability to conventional hot-pressed B4C in abrasive blasting, its innovative manufacturing process allows production of even the most complex shapes at a drastically reduced cost.

● Long Conventional Venturi Nozzles

Description: Long venturi nozzles with XSB liners and UNC 2"-4 1/2 coarse threaded Al jackets plus rubber sleeves

P/N	MODEL	d(mm)	L(mm)	REMARK
12660	XSBLV-3/50	4.8	140	
10510	XSBLV-4/50	6.4	140	
10520	XSBLV-5/50	7.9	145	1 1/4"
10530	XSBLV-6/50	9.5	170	INLET
10540	XSBLV-7/50	11.0	195	l=32mm
10550	XSBLV-8/50	12.7	215	
10560	XSBLV-10/50	16.0	230	
10570	XSBLV-12/50	19.0	230	



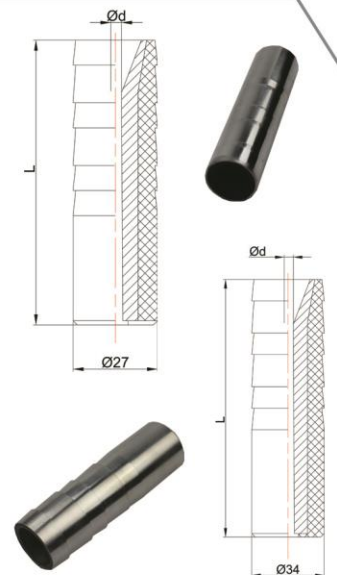
● Stick-Up Nozzles

Description: Stick-up nozzles with XSB liners and Al jackets fit ID 25mm hoses.

P/N	MODEL	d(mm)	L(mm)	REMARK
10580	XSBSU-4/25	6.4	100	INLET
10590	XSBSU-5/25	7.9	100	(18mm)

Description: Stick-up nozzles with XSB liners and Al jackets fit ID 32mm hoses.

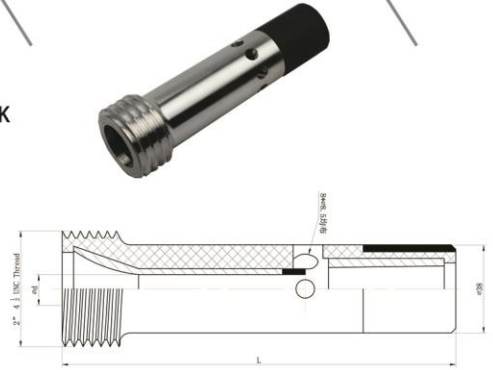
P/N	MODEL	d(mm)	L(mm)	REMARK
10600	XSBSU-4/32	6.4	110	
10610	XSBSU-5/32	7.9	110	INLET
10620	XSBSU-6/32	9.5	110	(25mm)
10630	XSBSU-7/32	11.0	110	
12460	XSBSU-8/32	12.0	110	
12470	XSBSU-9/32	14.0	110	



● Long Double Venturi Nozzles

Description: Long double venturi nozzles with XSB liners and UNC 2"-4 1/2 coarse threaded Al Jackets plus rubber sleeves

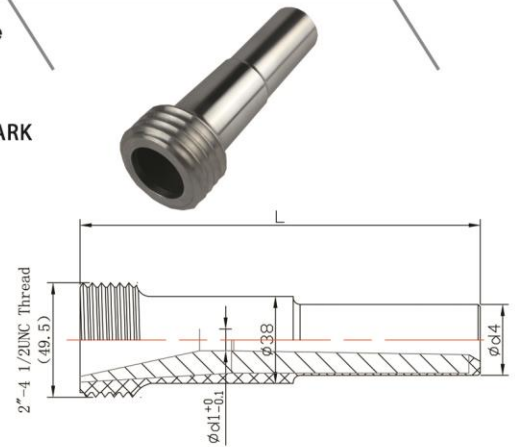
P/N	MODEL	d(mm)	L(mm)	REMARK
10640	XSBDV-4/50	6.4	135	
10650	XSBDV-5/50	7.9	155	1 1/4"
10660	XSBDV-6/50	9.5	170	INLET
10670	XSBDV-7/50	11.0	215	l=32mm
10680	XSBDV-8/50	12.7	230	



● Medium Venturi Nozzles

Description: Medium venturi nozzles with XSB liners and UNC 2"-4 1/2 coarse threaded Al jackets

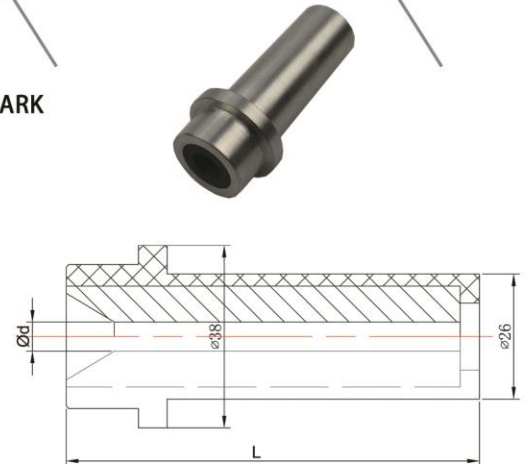
P/N	MODEL	d(mm)	L(mm)	REMARK
10690	XSBMV-4/50	6.4	85	
10700	XSBMV-5/50	7.9	85	1" INLET
10710	XSBMV-6/50	9.5	85	l=25mm
10720	XSBMV-7/50	11.0	85	
10730	XSBMV-8/50	12.0	85	



● Long Straight-Bore Nozzles

Description: Straight-bore nozzles with XSB liners and Al jackets

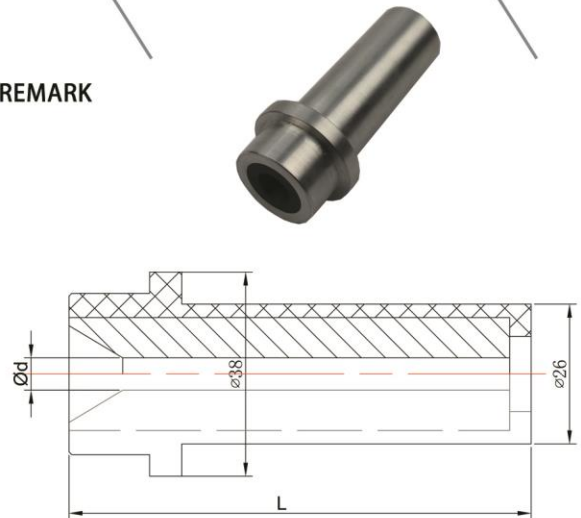
P/N	MODEL	d(mm)	L(mm)	REMARK
10740	XSBNHL-6	6	100	
10750	XSBNHL-7	7	100	
10760	XSBNHL-8	8	100	
10770	XSBNHL-9	9	100	
10780	XSBNHL-10	10	100	
10790	XSBNHL-11	11	100	
10800	XSBNHL-12	12	100	
10810	XSBNHL-13	13	100	
10820	XSBNHL-14	14	100	



● Straight-Bore Nozzles

Description: Straight-bore nozzles with XSB liners and Al jackets

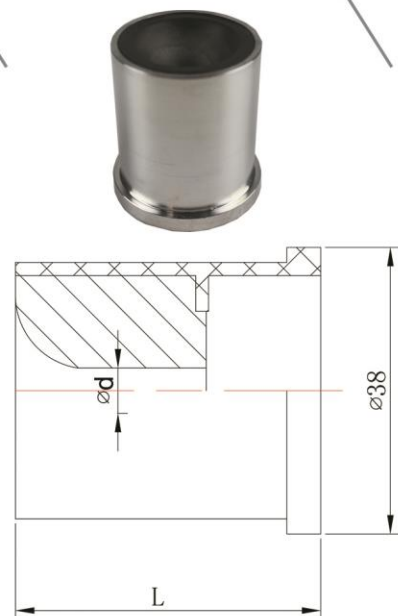
P/N	MODEL	d(mm)	L(mm)	REMARK
10830	XSBNH-6	6	86	
10840	XSBNH-7	7	86	
10850	XSBNH-8	8	86	
10860	XSBNH-9	9	86	
10870	XSBNH-10	10	86	
10880	XSBNH-11	11	86	
10890	XSBNH-12	12	86	
10900	XSBNH-13	13	86	
10910	XSBNH-14	14	86	



● Lead-In Nozzles

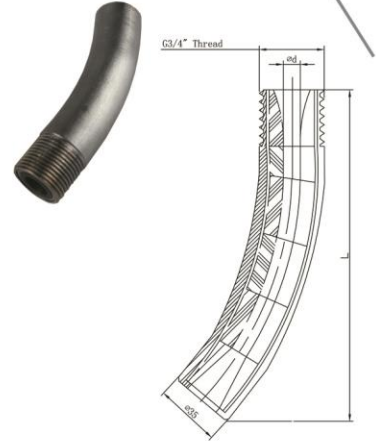
Description: Straight-bore nozzles with XSB liners and Al jackets for use in combination with the XSBNH series

P/N	MODEL	d(mm)	L(mm)	REMARK
10920	XSBLD-6	6	40.5	
10930	XSBLD-7	7	40.5	
10940	XSBLD-8	8	40.5	
10950	XSBLD-9	9	40.5	
10960	XSBLD-10	10	40.5	
10970	XSBLD-11	11	40.5	
10980	XSBLD-12	12	40.5	
10990	XSBLD-13	13	40.5	
11000	XSBLD-14	14	40.5	



Banana Curved Nozzles

Description: Curved nozzles with XSB liners and G3/4" thread ideal for blasting recesses, behind angles and inside pipes.



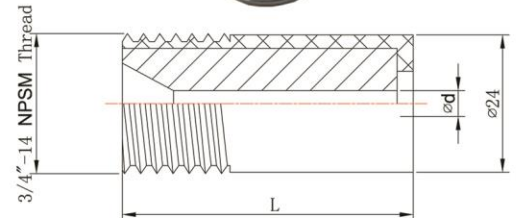
P/N	MODEL	d(mm)	L(mm)	ANGLE (°)	REMARK
11010	XSBBC-40/6	6	117	40	
11020	XSBBC-40/8	8	117	40	
11030	XSBBC-40/10	10	117	40	

Short Straight-Bore Nozzles

Description: Short straight-bore nozzles with XSB liners and NPSM 3/4"-14 threaded Al jackets



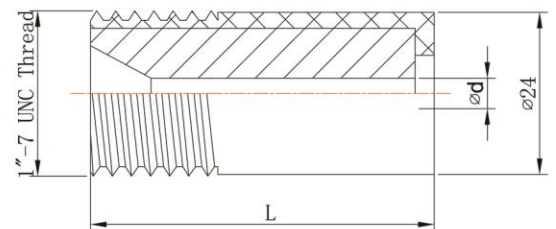
P/N	MODEL	d(mm)	L(mm)	REMARK
11200	XSBSBF-2	3.2	45	
11210	XSBSBF-3	4.8	45	
11220	XSBSBF-4	6.4	45	1/2" INLET l=13mm
11230	XSBSBF-5	8.0	45	
11240	XSBSBF-6	9.5	45	
12550	XSBSBF-7	11.0	45	
11250	XSBSBF-8	13.0	45	



Description: Short straight-bore nozzles with XSB liners and UNC 1"-7 threaded Al jackets



P/N	MODEL	d(mm)	L(mm)	REMARK
11260	XSBSBC-2	3.2	45	
11270	XSBSBC-3	4.8	45	
11280	XSBSBC-4	6.4	45	1/2" INLET l=13mm
11290	XSBSBC-5	8.0	45	
11300	XSBSBC-6	9.5	45	
12530	XSBSBC-7	11.0	45	
11310	XSBSBC-8	13.0	45	

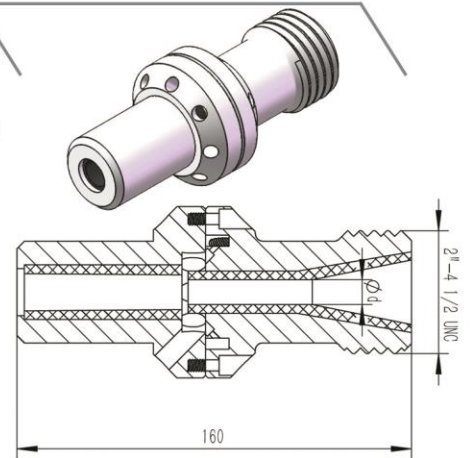




● Water Induction Nozzles

Description: Water induction nozzles with XSB liners and UNC 2"-4 1/2 coarse threaded AI Jackets

P/N	MODEL	d(mm)	L(mm)	REMARK
12480	BWIN-4/50	6.4	135	
12490	BWIN-5/50	7.9	155	
12500	BWIN-6/50	9.5	170	



Accessories

● Fan Nozzles

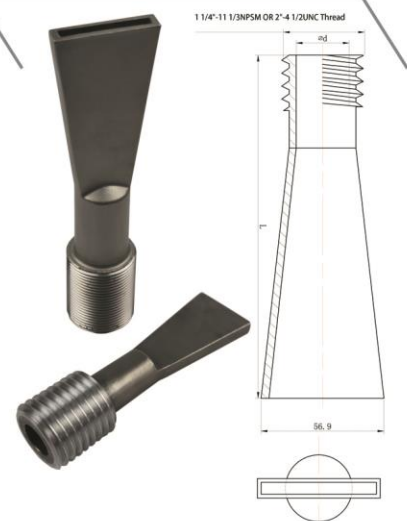
Fan Nozzles are Excellent for medium cleaning and stripping applications where an even dispersion of the abrasive throughout the wide uniform blast pattern is required. On large, the flat outlets of the fan blasting nozzles can double the production rate.

Description: Fit NPSM 1 1/4"-11 1/2 Thread

P/N	MODEL	ID (mm)	OUTLET (mm)	REMARK
11150	XCABF-1	16	4x54	

Description: Fit UNC2"-4 1/2 Thread

P/N	MODEL	ID (mm)	OUTLET (mm)	REMARK
11160	XCABF-2	16	4x54	



● Nylon Holders

Description: Fit UNC2"-4 1/2 Thread

P/N	MODEL	HOSE DIA(mm)	REMARK
11040	XNH-1	39	
11050	XNH-2	48	



● Nylon Quick Couplings

P/N	MODEL	HOSE DIA(mm)	REMARK
11060	XHC-1	39	
11070	XHC-2	48	



● Rubber Washers

Rubber Washer for Nozzle

P/N	MODEL	DIA(mm)	REMARK
11080	XNW-1	32	

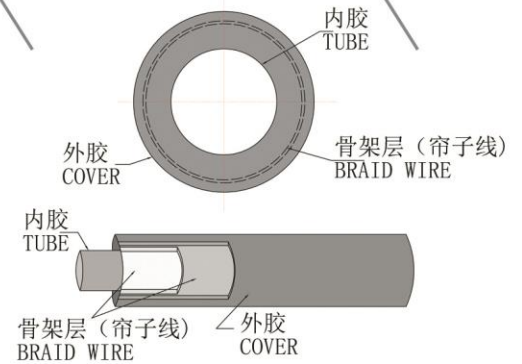
Rubber Washer for Quick Couplings

		HOSE		
P/N	MODEL	DIA(mm)	REMARK	
11090	XCW-1	39		
11100	XCW-2	48		



● Rubber Hoses

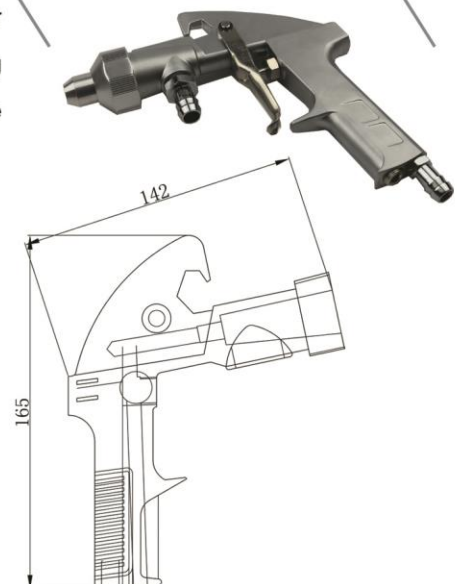
P/N	MODEL	OD/ID (mm)	L(m)	REMARK
11110	XRH-1	48/32	20	
11120	XRH-2	48/32	40	
11130	XRH-3	39/25	20	
11140	XRH-4	39/25	40	



● Blast Gun

The high-performance blast gun provides comfortable grip for operator and allows precise control of blast pattern. Its matt chrome-coating prevents rust formation over the complete lifetime. Its inside and nozzles are made of XSB.

P/N	MODEL	DESCRIPTION	REMARKS
11170	XBG-1	GUN BODY	
11180	XBG-2	NOZZLE	
11190	XBG-3	SCREW	



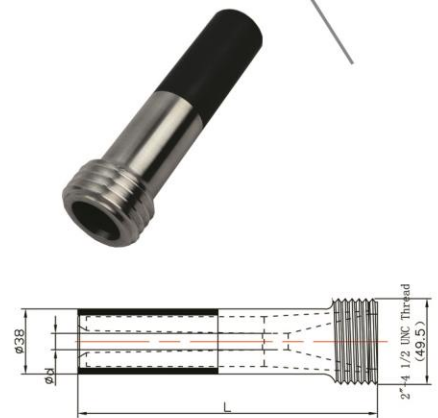


Our Tungsten Carbide (WC) nozzles with liners sintered with cobalt as the binder offer the greatest resistance to impact or flexing.

● Long Conventional Venturi Nozzles

Description: Long venturi nozzles with XTC liners and UNC 2"-4 1/2 coarse threaded Al jackets plus rubber sleeves

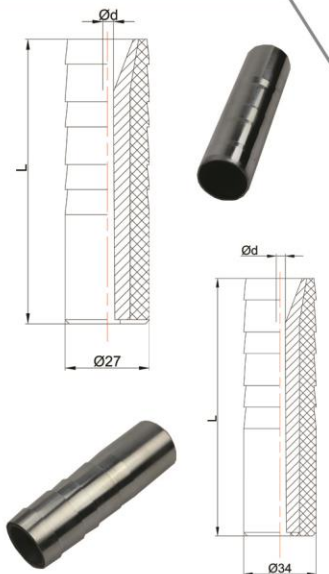
P/N	MODEL	d(mm)	L(mm)	REMARK
11940	XTCLV-4/50	6.4	145	
11950	XTCLV-5/50	7.9	150	
11960	XTCLV-6/50	9.5	175	1 1/4"
11970	XTCLV-7/50	11.0	195	INLET
11980	XTCLV-8/50	12.7	220	l=32mm
11990	XTCLV-10/50	16.0	230	
12000	XTCLV-12/50	19.0	230	



● Stick-up Nozzles

Description: Stick-up nozzles with XTC liners and Al jackets fitting ID 25mm hoses.

P/N	MODEL	d(mm)	L(mm)	REMARK
12260	XTCSU-3/25	5.0	100	INLET
12010	XTCSU-4/25	6.4	100	(18mm)
12020	XTCSU-5/25	7.9	100	



Description: Stick-up nozzles with XTC liners and Al jackets fitting ID 32mm hoses.

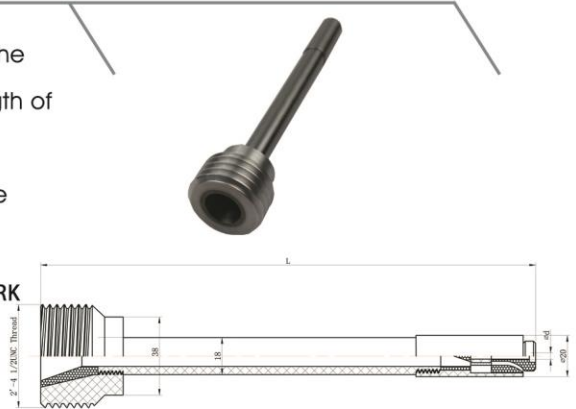
P/N	MODEL	d(mm)	L(mm)	REMARK
12030	XTCSU-4/32	6.4	120	
12040	XTCSU-5/32	7.9	120	INLET
12050	XTCSU-6/32	9.5	120	(25mm)
12060	XTCSU-7/32	11.0	120	
12270	XTCSU-8/32	12.7	120	

● Long Pipe Inside Blast Nozzle

The long Internal Pipe Blasting Nozzle (PI-360°L) is designed to clean the interior of pipes ranging from ID 19.05 ~50.8mm. The maximum length of the working area is 200mm.

Description: Venturi nozzle with a XTC liner and a UNC 2"-4 1/2" coarse threaded Al jacket.

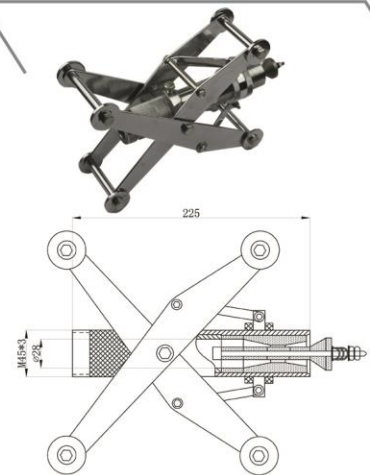
P/N	MODEL	d(mm)	L(mm)	REMARK
12070	XTCPI-360° L	N/A	200	



● Portable Internal Pipe Blast Tool

The Portable Internal Pipe Blast Tool is the perfect choice for cleaning pipes ranging from ID 50-300mm. It is composed of a venturi nozzle, a deflection tip, centering collars and a carriage.

P/N	MODEL	d(mm)	L(mm)	REMARK
12080	XTCPI-360° T	N/A	N/A	

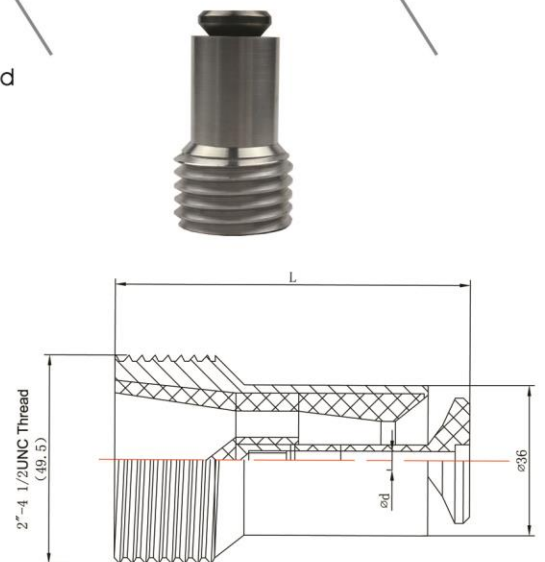


● Internal Pipe Blasting Nozzle

The smart internal pipe blasting nozzle directs the air/abrasive mixture at a deflection tip where the abrasive is distributed even in a 360 degree spread thus effectively blasting the inside of a pipe as it is pulled through. The deflection tip can be supplied separately from the nozzle.

Description: Venturi nozzle with a XTC liner and a UNC 2"-4 1/2 coarse threaded Al jacket

P/N	MODEL	d(mm)	L(mm)	REMARK
12090	XTCPI-360°	N/A	91	Nozzle
12100	XTCDT	6	11	Deflection Tip



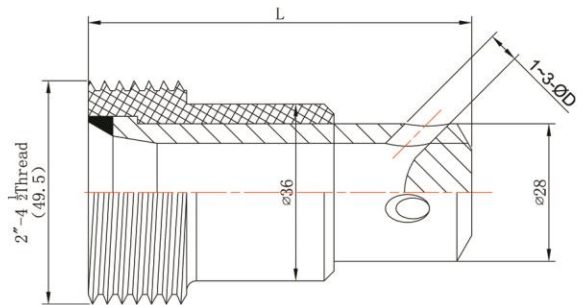
● Angle Nozzles

45 degree angle sandblasting nozzles are available in single and triple (equi-spaced) side outlets. They are ideal for blasting recesses, behind angles and inside pipes.

Description: Angle nozzles with XTC liners and a UNC 2"-4 1/2 coarse threaded Al jacket.



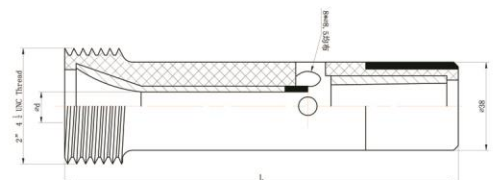
P/N	MODEL	d(mm)	L(mm)
12110	XTCAN-2X1/50	1x3.2	78
12120	XTCAN-2X2/50	2x3.2	78
12130	XTCAN-2X3/50	3x3.2	78
12140	XTCAN-3X1/50	1x4.8	78
12150	XTCAN-3X2/50	2x4.8	78
12160	XTCAN-3X3/50	3x4.8	78
12170	XTCAN-4X1/50	1x6.4	78
12180	XTCAN-4X2/50	2x6.4	78
12190	XTCAN-4X3/50	3x6.4	78
12200	XTCAN-5X1/50	1x8.0	78
12210	XTCAN-5X2/50	2x8.0	78
12220	XTCAN-5X3/50	3x8.0	78
12230	XTCAN-6X1/50	1x9.5	78
12240	XTCAN-6X2/50	2x9.5	78
12250	XTCAN-6X3/50	3x9.5	78



● Long Double Venturi Nozzles

Description: Long double venturi nozzles with XTC liners and UNC 2"-4 1/2 coarse threaded Al Jackets plus rubber sleeves

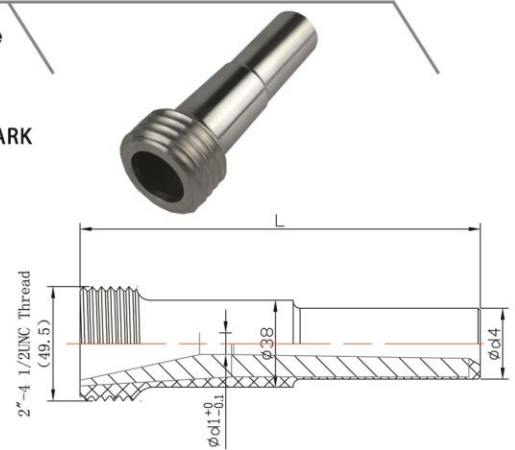
P/N	MODEL	d(mm)	L(mm)	REMARK
12280	XTCDV-4/50	6.4	135	
12290	XTCDV-5/50	7.9	155	1 1/4"
12300	XTCDV-6/50	9.5	170	INLET
12310	XTCDV-7/50	11.0	215	l=32mm
12320	XTCDV-8/50	12.7	230	



● Medium Venturi Nozzles

Description: Medium venturi nozzles with XTC liners and UNC 2"-4 1/2 coarse threaded Al jackets

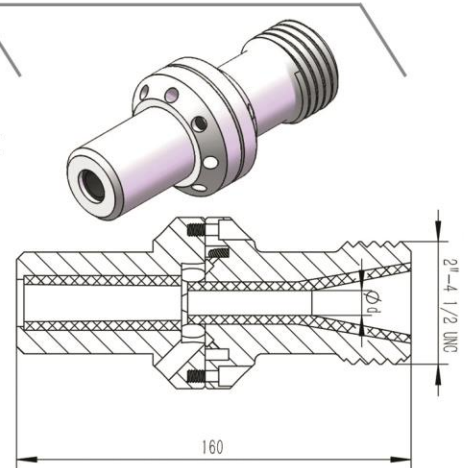
P/N	MODEL	d(mm)	L(mm)	REMARK
12330	XTCMV-4/50	6.4	85	1" INLET 1=25mm
12340	XTCMV-5/50	7.9	85	
12350	XTCMV-6/50	9.5	85	
12360	XTCMV-7/50	11.0	85	
12370	XTCMV-8/50	12.0	85	



● Water Induction Nozzles

Description: Water induction nozzles with XTC liners and UNC 2"-4 1/2 coarse threaded Al jackets

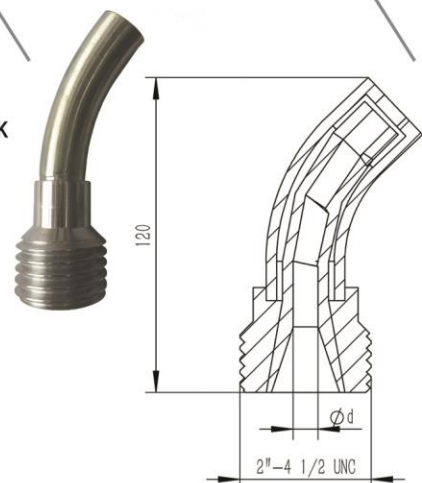
P/N	MODEL	d(mm)	L(mm)	REMARK
12380	TWIN-4/50	6.4	160	
12390	TWIN-5/50	7.9	160	
12400	TWIN-6/50	9.5	160	



● Banana Nozzles

Description: Banana nozzles with XTC liners and UNC 2"-4 1/2 threaded Al jackets

P/N	MODEL	d(mm)	L(mm)	REMARK
12410	BN-4/50	6.4	120	
12420	BN-5/50	7.9	120	
12430	BN-6/50	9.5	120	
12440	BN-7/50	11.0	120	
12450	BN-8/50	12.7	120	



SHANGHAI XIANG RONG INDUSTRIAL EQUIPMENT CO. LTD

HEADQUARTER:

Shanghai Xiang Rong Industrial Equipment Co. Ltd.

Phone:+86 21 3616 1907

Fax:+86 21 3616 0055

E-mail: info@xr-ind.cn

<http://www.xr-ind.cn>

Add: #1-155th Lane Songbao Rd. Suite 613 Shanghai 200940 PRC

FACTORY:

Jiecheng Cramics Co. Ltd.-Xiang Rong Ceramics Factory

Phone:+86 570 7882868

Add.:46 Longyou Industrial Park Quzhou Zhejiang Province 324400 PRC

EUROPE BRANCH:

H.M.T. (Hard Materials Technologies) GmbH

Serge WEYDERT

Managing Director

Phone:+352 691 96 86 31

E-mail: weydert.s@hmt-cera.com

<http://www.hmt-cera.com>

Add: 7 Rue Du Marche L-9260 Diekirch Luxembourg